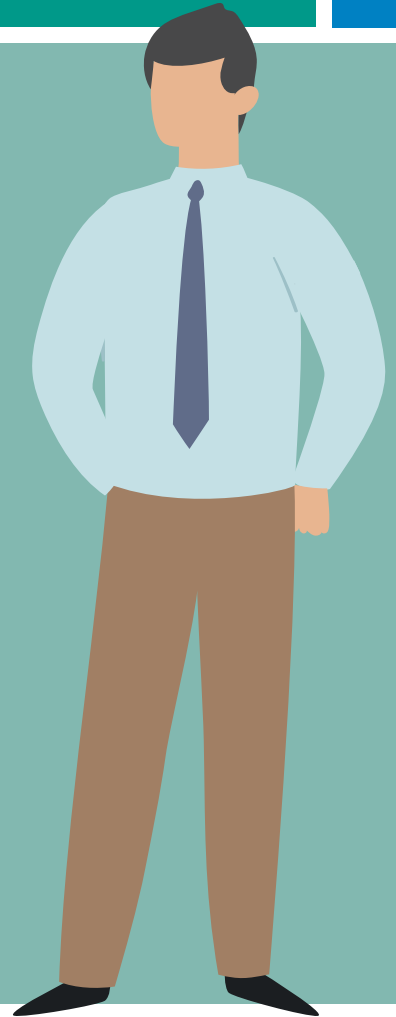


HOW MIGHT WE CREATE AN EQUITABLE CENSUS?

Our vision is that all Clevelanders are counted and will receive the necessary resources for the next 10 years. Who stands the risk of not being counted? Our hard to count (HTC) communities. See below and learn more, so we can ensure a complete count.

MEET GEORGE:

An Asian male, 61 years of age currently living in Downtown Cleveland (44114). His HTC factors include race/ethnicity, non-traditional housing, and he is a non-english speaker.



AGE AND GENDER



HTC FACTORS



RACE BY %

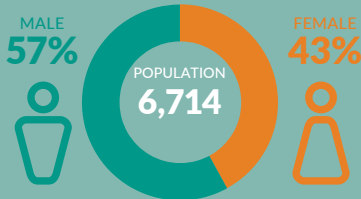


ABOUT THE NEIGHBORHOOD

NEIGHBORHOOD



POPULATION BY GENDER



HTC AMOUNT



NUMBER OF PERSONS AFFECTED IN THIS NEIGHBORHOOD

2,618



The total number of hard-to-count people who will gain better education, health, food access and mobility after completing the census.

CONTACT THE MAIN LIBRARY BRANCH FOR ASSISTANCE:



Main Library
Louis Stokes Wing
525 Superior Avenue
Cleveland, OH 44114
216-623-2800 • cpl.org

WHY THE CENSUS MATTERS FOR THIS NEIGHBORHOOD:



EDUCATION

4.4% of persons without a high school diploma



HEALTH

15.4% of persons who are uninsured



FOOD

24.5% of persons using Supplemental Nutrition Assistance Program (SNAP)



ROADS

16% of persons who rely on public transportation

